

Thank Microsoft for this complexity

Illustration 1

In your Windows Control Panel, go to ODBC Data Sources, then **Double Click** or press **<Enter>**.

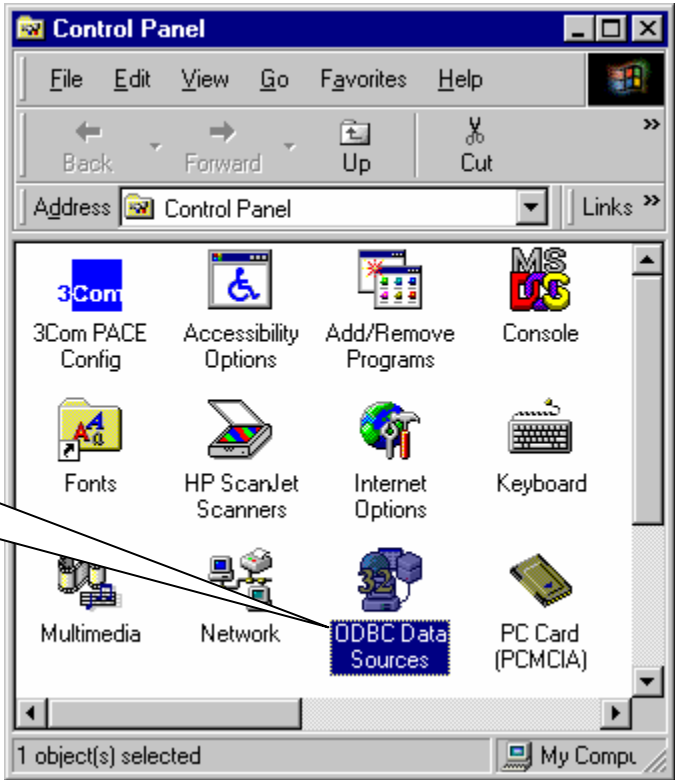


Illustration 2

Click on **System DSN** Tab

If HSMaster is listed here, then click on **Configure...** and go to Illustration 5, otherwise click on **Add...** and go to next Illustration

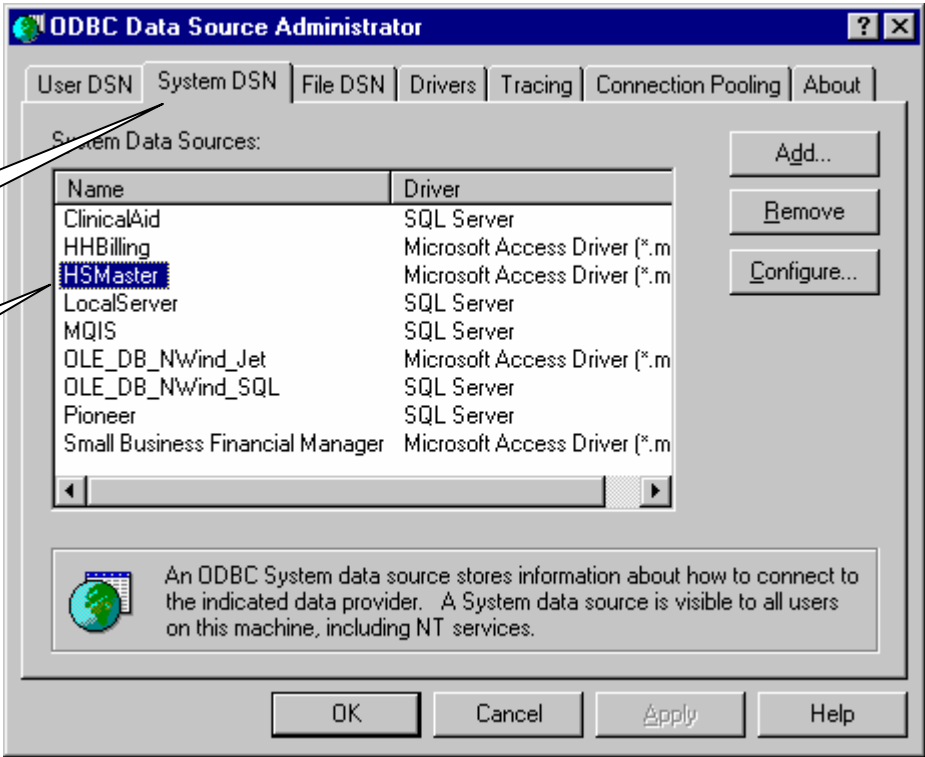


Illustration 3

Select Microsoft Access Driver from the list, and then click **Finish**.

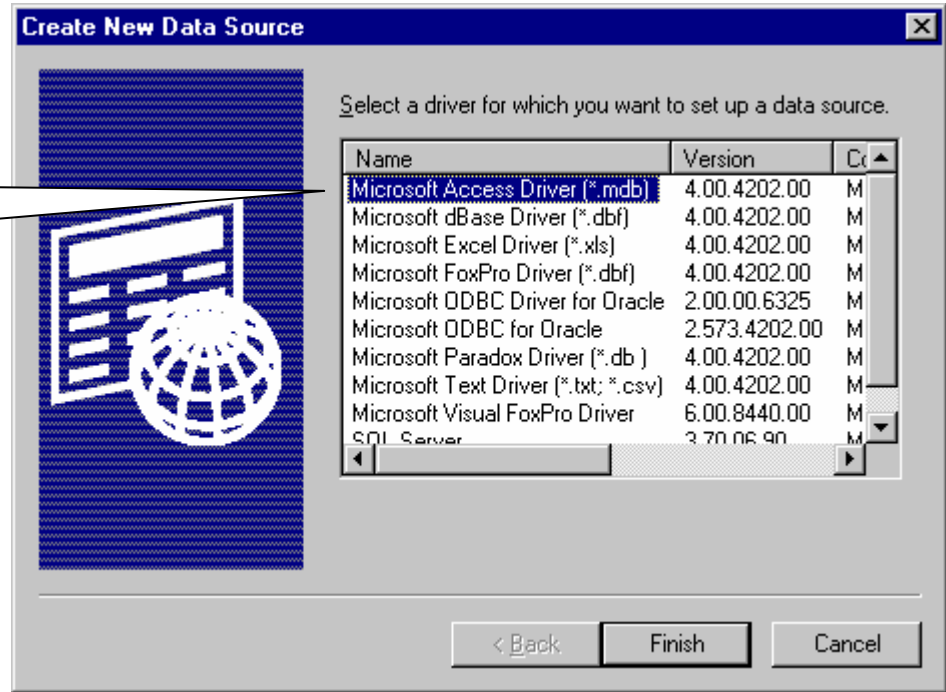


Illustration 4

In Data Source Name field, type:
HSMaster
In Description field type:
Horseshoe Program
Then click on **Select...** and go to Illustration 6

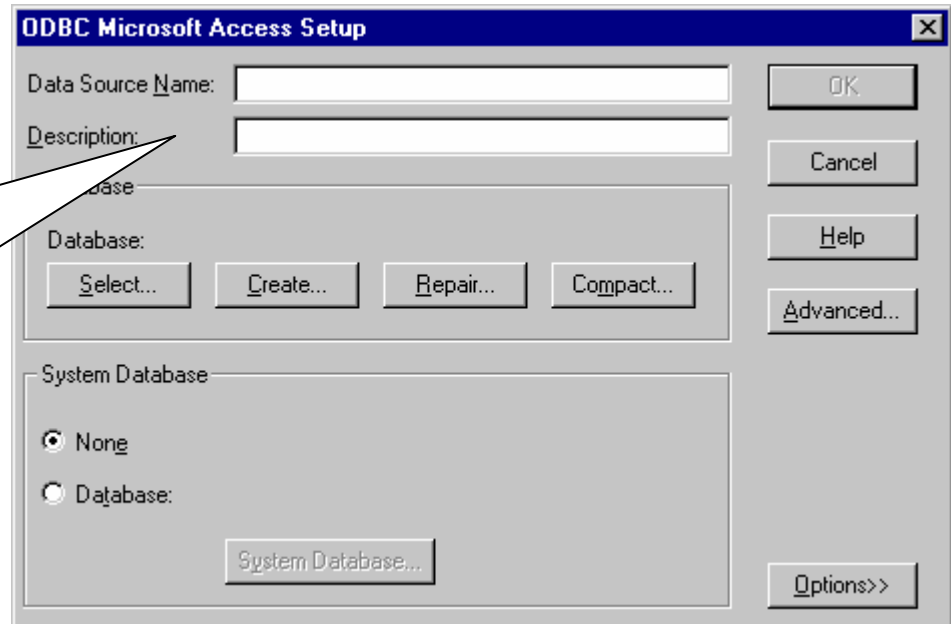


Illustration 5

Database should be C:\Program Files\HSMaster\HSMaster.mdb or whatever folder you installed the program to (if you did not install to the default directory).

If the Database is correct then click **OK** and exit, otherwise click on **Select...** and go to next Illustration.

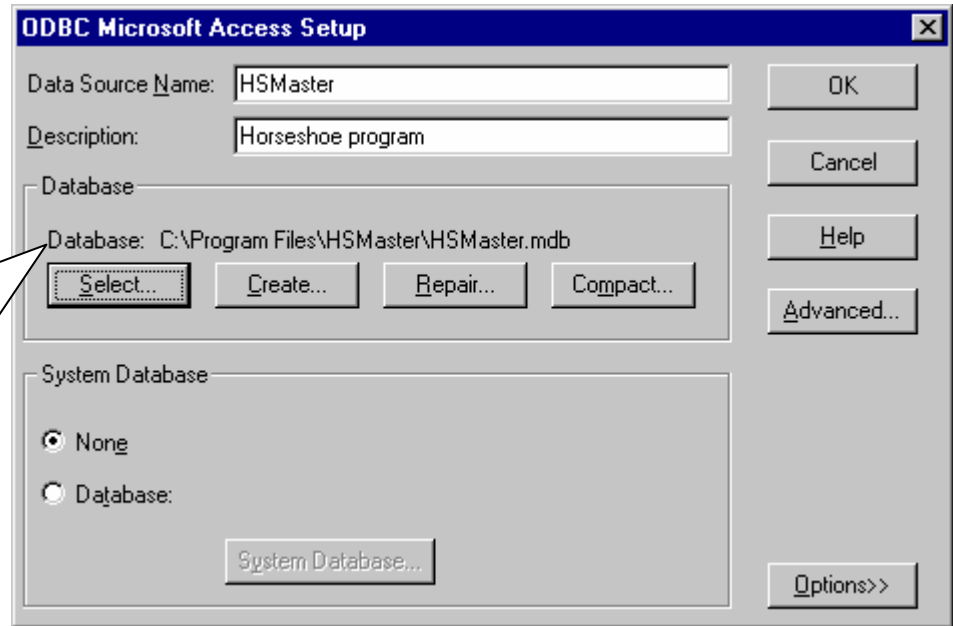


Illustration 6

Before you leave this screen, HSMaster must be displayed in both of these windows

Locate the HSMaster install folder in this window. Once you have located it, then double click on it, and HSMaster.mdb will appear in the left hand lower window.

Once HSMaster.mdb is displayed in this window, you can click on it, bring it to the top window. Click OK. You may need to click OK several more times to get all of the way out. Your ODBC should be setup.

